

# RTHROX™

Arthroscopy Solution



Bonetech Medisys  
implanting precision





**Feature :**

- Specifically designed for endoscopic femoral fixation where graft protection is needed.
- Polished, fully radiused threads provide maximum graft protection.
- Wide-bone cannulation for easy guide wire insertion and removal.
- The Taper-Tip style offers sharper initiating threads and a more pronounced taper for faster, easier insertion.
- Designed reduce the possibility of bone plug migration during placement.
- Round head reduces possibility of graft damage during of after implantation.
- Universal screw for either tibial or femoral applications. Standard 4.5mm hex for easy insertion and removal.
- Cannulated for use with a guide wire.
- Material - Titanium alloy.

**Non Sterile**

CODE	DIA	LENGTH
BA101.07.20	7 mm	20 mm
BA101.07.25	7 mm	25 mm
BA101.07.30	7 mm	30 mm
BA101.08.20	8 mm	20 mm
BA101.08.25	8 mm	25 mm
BA101.08.30	8 mm	30 mm
BA101.09.20	9 mm	20 mm
BA101.09.25	9 mm	25 mm
BA101.09.30	9 mm	30 mm
BA101.10.20	10 mm	20 mm
BA101.10.25	10 mm	25 mm
BA101.10.30	10 mm	30 mm
BA101.11.20	11 mm	20 mm
BA101.11.25	11 mm	25 mm
BA101.11.30	11 mm	30 mm

**Sterile**

CODE	DIA	LENGTH
BA102.07.20	7 mm	20 mm
BA102.07.25	7 mm	25 mm
BA102.07.30	7 mm	30 mm
BA102.08.20	8 mm	20 mm
BA102.08.25	8 mm	25 mm
BA102.08.30	8 mm	30 mm
BA102.09.20	9 mm	20 mm
BA102.09.25	9 mm	25 mm
BA102.09.30	9 mm	30 mm
BA102.10.20	10 mm	20 mm
BA102.10.25	10 mm	25 mm
BA102.10.30	10 mm	30 mm
BA102.11.20	11 mm	20 mm
BA102.11.25	11 mm	25 mm
BA102.11.30	11 mm	30 mm





**Feature :**

- Specifically designed for endoscopic femoral fixation where graft protection is needed.
- Polished, fully radiused threads provide maximum graft protection.
- Wide-bone cannulation for easy guide wire insertion and removal.
- The Taper-Tip style offers sharper initiating threads and a more pronounced taper for faster, easier insertion.
- Designed reduce the possibility of bone plug migration during placement.
- Round head reduces possibility of graft damage during of after implantation.
- Universal screw for either tibial or femoral applications. Standard 4.5mm hex for easy insertion and removal.
- Cannulated for use with a guide wire.
- Material - Titanium alloy.

**Non Sterile**

CODE	DIA	LENGTH
BA103.07.20	7 mm	20 mm
BA103.07.25	7 mm	25 mm
BA103.07.30	7 mm	30 mm
BA103.08.20	8 mm	20 mm
BA103.08.25	8 mm	25 mm
BA103.08.30	8 mm	30 mm
BA103.09.20	9 mm	20 mm
BA103.09.25	9 mm	25 mm
BA103.09.30	9 mm	30 mm
BA103.10.20	10 mm	20 mm
BA103.10.25	10 mm	25 mm
BA103.10.30	10 mm	30 mm
BA103.11.20	11 mm	20 mm
BA103.11.25	11 mm	25 mm
BA103.11.30	11 mm	30 mm

**Sterile**

CODE	DIA	LENGTH
BA104.07.20	7 mm	20 mm
BA104.07.25	7 mm	25 mm
BA104.07.30	7 mm	30 mm
BA104.08.20	8 mm	20 mm
BA104.08.25	8 mm	25 mm
BA104.08.30	8 mm	30 mm
BA104.09.20	9 mm	20 mm
BA104.09.25	9 mm	25 mm
BA104.09.30	9 mm	30 mm
BA104.10.20	10 mm	20 mm
BA104.10.25	10 mm	25 mm
BA104.10.30	10 mm	30 mm
BA104.11.20	11 mm	20 mm
BA104.11.25	11 mm	25 mm
BA104.11.30	11 mm	30 mm





## BE-ON™

Plain endo button without suture Loop

### Feature

- The 'BE-ON' BUTTON is the original endoscopic femoral Soft tissue fixation device.
- It can be used for single incision, soft tissue, or bone tendon - bone fixation.

CODE : BA105

## BE-ON BUTTON™

with Continuous Loop Suture

### Indication

- Solid fixation for either primary or auxiliary fixation in ACL or PCL reconstruction
- Ideal for a post or screw and washer technique
- Distal fixation allows circumferential healing of the ACL graft to tunnel wall
- Significantly enhances soft tissue apposition to bone to speed healing and strengthen the repair

### Feature

Promotes insertion site healing

Rests on the cortical bone surface

**Strong cortical fixation**

Provides dependable fixation regardless of cancellous bone quality

**Provides tactile "flipping" feedback**

Ensures proper seating of device

**Hassel-free revision surgeries**

Standard technique allows for endoscopic revision without lateral incision and bone removal

**Most comprehensive line of femoral fixation solutions**

Can be used in Single-Bundle soft tissue fixation; Double-Bundle soft tissue fixation; Bone-Tendon-Bone fixation

### Sizes

CODE	LENGTH
BA106.10	10 mm
BA106.15	15 mm
BA106.20	20 mm
BA106.25	25 mm
BA106.30	30 mm



## FLEXROPE™

ACL fixation button

### Feature

- ACL FlexRope offer four-point knotless locking system to provide cyclic displacement and high ultimate loads.
- One size fits all.
- No need to calculate implant size.
- Easy and quick graft Loading.
- Options for various graft types and a variety of surgical indications.
- Convenient button flip visualization.

CODE : BA107

## SUTURE DISK

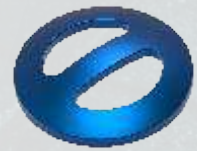
### Feature

- Titanium suture disk is for fixating grafts with sutures.
- Used for tibial fixation of the ACL and PCL graft.
- Indirect extra-articular fixation of tibial and tibial-end of the graft.
- Material - Titanium alloy.



Round hole

CODE : BA108



'D' Type hole

CODE : BA109

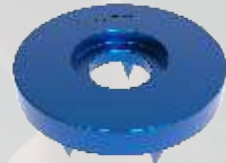


## SPIKE WASHER

for 4.0 mm Cancellous Screw

### Feature

- The low-profile screw and washer combination provides 31% to 50% lower profile than competitive versions.
- Low profile cancellous screw and spiked washer set provide continuous strength for soft tissue fixation to bone.
- Low profile head to reduce soft tissue irritation.
- Can be used as a post screw for suture of soft tissue fixation.
- Ideal for ACL, PCL, collateral ligament or posteriolateral reconstruction.
- Unique washer design with spikes on the inferior surface provides excellent fixation of soft tissue to bone.
- Low profile cancellous screws available in diameter 4.0mm and 6.5mm, Spiked washers also available in small and large size accordingly.
- Material - Titanium alloy



CODE : BA110

## LOW PROFILE

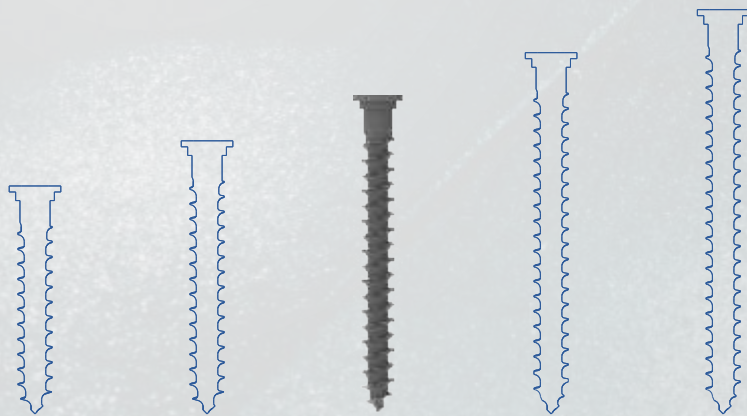
4.0 mm Cancellous Screw

### Feature

- Low profile head to reduce soft tissue irritation.
- Can be used as a post screw for suture or soft tissue fixation
- Ideal for ACL, PCL, collateral ligament or posteriolateral reconstruction.

### Sizes

CODE	LENGTH
BA111.25	25 mm
BA111.30	30 mm
BA111.35	35 mm
BA111.40	40 mm
BA111.45	45 mm

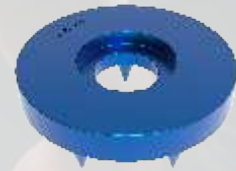


## SPIKE WASHER

for 6.5 mm Cancellous Screw

### Feature

- Spiked washer is design for Low profile cancellous screw
- Spiked washer is used for Knee reconstruction procedures



CODE : BA112

## LOW PROFILE

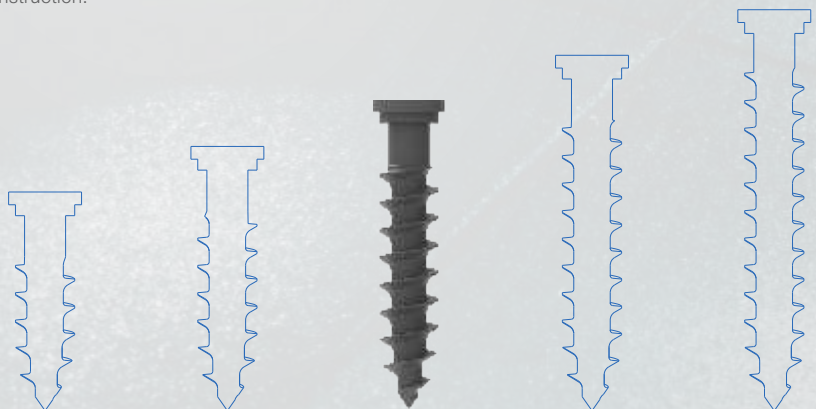
6.5 mm Cancellous Screw

### Feature

- Low profile head to reduce soft tissue irritation.
- Can be used as a post screw for suture or soft tissue fixation
- Ideal for ACL, PCL, collateral ligament or posteriolateral reconstruction.

### Sizes

CODE	LENGTH
BA113.25	25 mm
BA113.30	30 mm
BA113.35	35 mm
BA113.40	40 mm
BA113.45	45 mm





# TIBIA

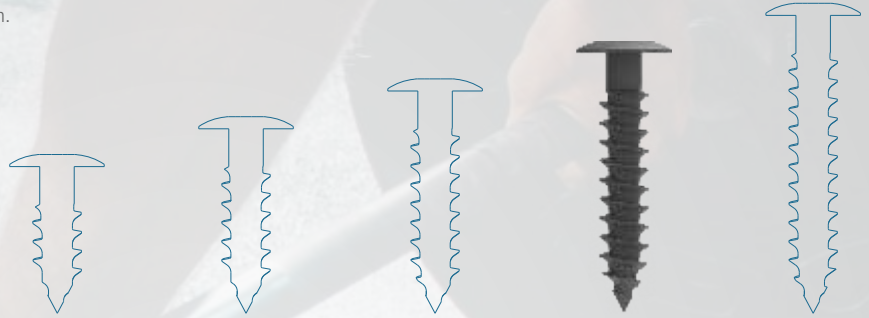
## Post fixation Screw

### Feature

- Used to securely trap attached sutures and bulky suture knots atraumatically under the low profile head to eliminate soft tissue irritation.
- Available in diameter 6.5mm and lengths 30, 35 and 40mm.
- Material - Titanium alloy.

### Sizes

CODE	LENGTH
BA114.20	20 mm
BA114.25	25 mm
BA114.30	30 mm
BA114.35	35 mm
BA114.40	40 mm



# ARTHROSCOPY

## Ligament Staple Spiked

### Feature

- The staple fixation system provides a simple means of attaching tissue to bone.
- Low-profile, wide staple base provides better load distribution.
- Spike-post leg design encourages uninterrupted vascular flow to the underlying tissue.
- Sharp leg points for easier penetration into cortical bone.
- Two pronged implant for superior pull out strength.
- Fixation staples are available in two sizes.
- Material - Titanium alloy.



Small



Medium



Large

### Sizes

CODE	SIZES
BA115.S	Small
BA115.M	Medium
BA115.L	Large



Interference Screw



Features

- SOLIDFIX™ Interference Screw provides strong mechanical fixation for both bone patellar tendon-bone and soft tissue grafts in ACL and PCL reconstruction.
- SOLIDFIX™ Interference Screws feature a thread pattern that allows for a simple surgical technique with minimal tunnel preparation.
- Non-absorbable SOLIDFIX™ Interference screw incorporates VISTA PEEK polymer.
- VISTA PEEK material exhibits an ideal combination of strength, stiffness and toughness which surpasses absorbable materials.
- PEEK is a thermoplastic material with excellent biocompatibility and biostability characteristics as per ASTM F2026.
- SOLIDFIX™ Interference Screw offer the revision ability of an absorbable Screw.
- PEEK has inherent radiolucent characteristics that have widely gained confidence and acceptance in the medical community.

Sterile

CODE	DIA	LENGTH
BA116.07.20	7 mm	20 mm
BA116.07.25	7 mm	25 mm
BA116.07.30	7 mm	30 mm
BA116.08.20	8 mm	20 mm
BA116.08.25	8 mm	25 mm
BA116.08.30	8 mm	30 mm
BA116.09.20	9 mm	20 mm
BA116.09.25	9 mm	25 mm
BA116.09.30	9 mm	30 mm
BA116.10.20	10 mm	20 mm
BA116.10.25	10 mm	25 mm
BA116.10.30	10 mm	30 mm
BA116.11.20	11 mm	20 mm
BA116.11.25	11 mm	25 mm
BA116.11.30	11 mm	30 mm

Interference Screw

Features

- BIO ACL was designed to fulfill two core aims: provide appropriate mechanical properties necessary for ligament reconstruction whilst ensuring a regulated resorption and osteo integration to form architectural bone through hydrolysis.
- 75% PLDLLA & 25% BCP: the ideal ratio between the necessary mechanical resistance for the indication and the faculty to generate bone growth.
- The thread is specific to each screw diameter so as to systematically provide the maximum amount of contact between implant and bone
- Smooth thread to minimize damage on ligament
- Graduated tapered design to optimize torque



Sterile

CODE	DIA	LENGTH
BA117.07.24	7 mm	24 mm
BA117.07.30	7 mm	30 mm
BA117.08.24	8 mm	24 mm
BA117.08.30	8 mm	30 mm
BA117.09.24	9 mm	24 mm
BA117.09.30	9 mm	30 mm
BA117.10.24	10 mm	24 mm
BA117.10.30	10 mm	30 mm
BA117.11.35	11 mm	35 mm

## FIBER TAPE

CODE : BA118

### Features

- The Fiber Tape is an Adjustable fiber Loop for Attachable Button System that can be used for cortical fixation with Tibial base Plate over the Cortical bone.
- The Adjustable Fiber loop can be used for the tibial fixation in all inside ACL-mechanism for strong and stiff graft fixation

BA118.20 : 2.0 mm W x 225 mm L (White-Blue)



## SUTURE ANCHOR

Plain

### Sizes

CODE	DIA
BA119.24	Ø 2.4 mm
BA119.28	Ø 2.8 mm
BA119.30	Ø 3.0 mm
BA119.50	Ø 5.0 mm
BA119.65	Ø 6.5 mm



## SUTURE ANCHOR

Plain Dual Thread

### Sizes

CODE	DIA
BA120.24	Ø 2.4 mm
BA120.28	Ø 2.8 mm
BA120.30	Ø 3.0 mm
BA120.50	Ø 5.0 mm
BA120.65	Ø 6.5 mm





# SOLID FIX™

## Shoulder Suture Anchor

### Feature :

- Compresses the graft against the tunnel walls for 360° graft-to-bone contact.
- Accommodates both single- and double-bundle reconstruction
- procedures as well as primary and revision surgeries.
- Available in five sizes to accommodate graft diameters from 2.4 mm to 6.5 mm

Loaded with one pc U Fiber

### Sizes

CODE	DIA
BA121.24	Ø 2.4 mm
BA121.28	Ø 2.8 mm
BA121.30	Ø 3.0 mm
BA121.50	Ø 5.0 mm
BA121.65	Ø 6.5 mm



# SOLID FIX™

## Shoulder Suture Anchor Dual Thread

### Feature :

- Compresses the graft against the tunnel walls for 360° graft-to-bone contact.
- Accommodates both single- and double-bundle reconstruction procedures as well as primary and revision surgeries.
- Available in five sizes to accommodate graft diameters from 2.4 mm to 6.5 mm

Loaded with one pc U Fiber

### Sizes

CODE	DIA
BA122.24	Ø 2.4 mm
BA122.28	Ø 2.8 mm
BA122.30	Ø 3.0 mm
BA122.50	Ø 5.0 mm
BA122.65	Ø 6.5 mm





## SOLID FIX™

### Shoulder Suture Anchor with needle

Loaded with one pc U Fiber with needle

#### Feature :

- Tremendous pull-out strength.
- Self-drilling. A drill is available for use in hard bone if desired.
- Preloaded with One USP #2 Biofiber in a single use sterile pack.
- Also available in needled version.

#### Sizes

CODE	DIA
BA123.30	Ø 3.0 mm
BA123.50	Ø 5.0 mm
BA123.65	Ø 6.5 mm



# SOLID FIX™

## Shoulder Suture Anchor with needle Dual Thread

Loaded with one pc U Fiber with needle

### Feature :

- Tremendous pull-out strength.
- Self-drilling. A drill is available for use in hard bone if desired.
- Preloaded with One USP #2 Biofiber in a single use sterile pack.
- Also available in needled version.

### Sizes

CODE	DIA
BA124.30	Ø 3.0 mm
BA124.50	Ø 5.0 mm
BA124.65	Ø 6.5 mm





## SOLID FIX™

### Shoulder Suture Anchor - PEEK

#### Feature :

- Tremendous pull-out strength.
- Self-drilling. A drill is available for use in hard bone if desired.
- Preloaded with One USP #2 Biofiber in a single use sterile pack.
- Also available in needled version.

#### Sizes

CODE	DIA
BA125.28	Ø 2.8 mm
BA125.30	Ø 3.0 mm



## SOLID FIX™

### Shoulder Suture Anchor Knotless - PEEK

#### Feature :

- Tremendous pull-out strength.
- Self-drilling. A drill is available for use in hard bone if desired.
- Preloaded with One USP #2 Biofiber in a single use sterile pack.
- Also available in needled version.

#### Sizes

CODE	DIA
BA126.T55	Ø 5.5 mm ( Titanium tip)
BA126.P55	Ø 5.5 mm ( PEEK tip)



## B-FIBER WIRE

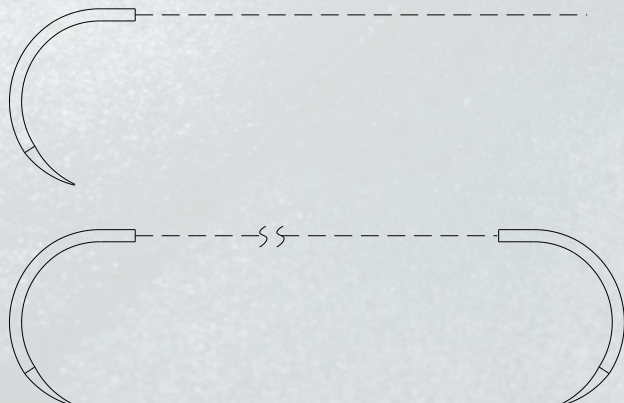
### # 2 USP

#### Feature :

- Tremendous pull-out strength.
- Self-drilling. A drill is available for use in hard bone if desired.
- Preloaded with One USP #2 Biofiber in a single use sterile pack.
- Also available in needled version.

#### Sizes

CODE	DIA
BA127.90	90 cm with Single Needle
BA127.120	120 cm with Double Needle





**TRAUMEX**

**INTREX**

**NEXPINE**

**RTHROX**

**XTERFIX**

**ARTIQLX**

**PRIMEX**

**BONETECH  
ACADEMIA**



[info@bonetechmedisys.com](mailto:info@bonetechmedisys.com)

[www.bonetechmedisys.com](http://www.bonetechmedisys.com)

ISO 13485:2016 · GMP · FSC



**BONETECH MEDISYS PVT. LTD.**

50-53 Sarovar Industrial Park, S.P. Ring Road,  
Vatva-Hathijan, A'bad- 382445, Gujarat, India